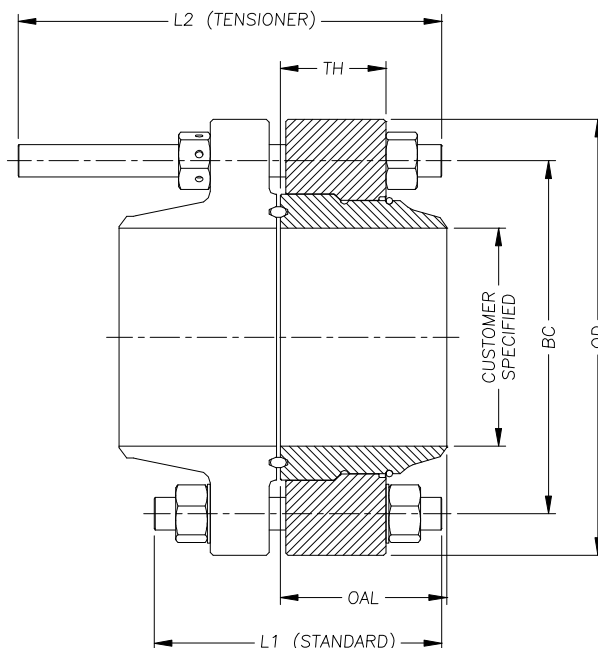




SWIVEL RING FLANGE ANSI / MSS 600 FLANGE DIMENSIONS



Nom. Size	ANSI Class	Outside Diameter (in)	Overall Length (in)	Flange Thickness (in)	Stud Data					Weight (lbs)	RTJ No.
					Bolt Circle (in)	Stud Size (in)	Stud Qty	Standard Length (in)	Tensioner Length (in)		
					BC			L1	L2		
2	600	6.50	3.89	2.44	5.00	5/8	8	7.50	-----	19	23
3	600	8.25	4.47	2.31	6.63	3/4	8	8.00	13.00	31	31
4	600	10.75	4.56	2.44	8.50	7/8	8	8.50	14.00	54	37
6	600	14.00	5.72	2.81	11.50	1	12	9.50	15.00	111	45
8	600	16.50	6.09	3.13	13.75	1 1/8	12	10.50	15.50	139	49
10	600	20.00	7.47	4.18	17.00	1 1/4	16	12.50	17.50	263	53
12	600	22.00	8.23	4.81	19.25	1 1/4	20	13.00	18.50	343	57
14	600	23.75	8.95	5.06	20.75	1 3/8	20	13.50	19.00	477	61
16	600	27.00	9.59	5.81	23.75	1 1/2	20	15.00	20.00	662	65
18	600	29.25	10.47	6.06	25.75	1 5/8	20	15.50	21.00	821	69
20	600	32.00	11.73	6.75	28.50	1 5/8	24	16.50	22.00	945	73
24	600	37.00	13.13	7.81	33.00	1 7/8	24	19.00	24.50	1367	77
26	600	40.00	13.88	9.00	36.00	1 7/8	28	20.50	26.00	1958	93
30	600	44.50	15.22	9.75	40.25	2	28	21.50	27.00	2345	95
36	600	51.75	17.92	11.69	47.00	2 1/2	28	25.00	31.00	3750	98